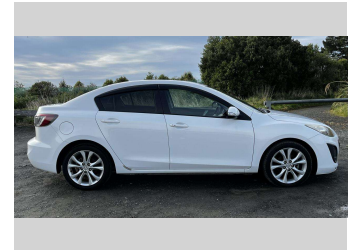
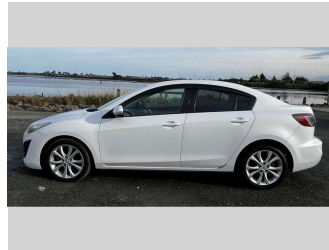



# 2010 Mazda Axela 20E




**Purchase Price** **\$11,990**  
Includes GST, Registration & Licensing

Finance may be available on this vehicle. Ask one of our friendly staff for more information.



Gain peace of mind with Mechanical Breakdown Insurance. **Ask us how.**



**Top features**

- » 3 Full Seat Belts In R...
- » 4 Air Bags
- » ABS Braking
- » Air Con
- » Alloy Wheels
- » Audio Control Steering...
- » Auto Lights
- » CD Player
- » ESC
- » Fog Lamps
- » Idling Stop
- » Indicator Mirror
- » ISOFIX Child Seat Anch...
- » Keyless Entry
- » Keyless Start
- » Monsoon Shield
- » Multi Function Steerin...
- » Paddle Shift

Body Style  
**4 door, Sedan**

Odometer  
**104,631 km**

Engine  
**2000 cc, Internal Combustion**

Fuel Type  
**Petrol**

Transmission  
**Automatic, Front Wheel**

Wheels  
-

VIN  
**7AT0C13JX24105104**

Interior  
**Black, Cloth**

Safety



Based on 2024 UCSR rating for 09-13 models

Reg No.  
-

Ext Colour  
**White**

History  
**Ex-Overseas**

Seats  
**5 seats, Cloth**

CO2 Emissions  
**★★★★☆**  
**177 grams/km**

Energy Economy  
**★★★☆☆**


**Annual fuel cost of \$2,980**  
**7.6L per 100km**

Cost per year is an estimate based on petrol price of \$2.80 per litre and an average distance of 14000 km. Emissions and Energy Economy figures standardised to 3P WLTP.

**Stock ID: 47143**



Regent Car Court | Phone 0276122217 | Email south@regentcars.co.nz  
167-169 Clyde Street, Invercargill 9810, New Zealand  
www.regentcars.co.nz



★★★★★  
4.71 | 743 reviews