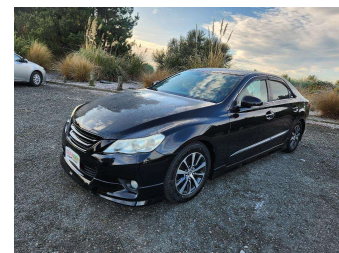



2012 Toyota MARK-X 250G



Purchase Price **\$13,990**
Includes GST, Registration & Licensing

Finance may be available on this vehicle. Ask one of our friendly staff for more information.



Gain peace of mind with Mechanical Breakdown Insurance. **Ask us how.**



Top features

- » 2 Air Bags
- » ABS Braking
- » Air Con
- » Alloy Wheels
- » Auto Lights
- » ESC
- » Fog Lamps
- » Indicator Mirror
- » Keyless Entry
- » Keyless Start
- » Leather Seats
- » Power Mirrors
- » Power Steering
- » Push Button Start
- » Radio
- » Retractable Mirrors
- » Smart Key
- » Tinted Windows

Body Style
4 door, Sedan

Odometer
145,000 km

Engine
2500 cc, Internal Combustion


Fuel Type
Petrol

Transmission
Automatic

Wheels
-

VIN
-

Interior
Black

Safety

Based on 2023 VSRR rating

Reg No.
-

Ext Colour
Black

History
Ex-Overseas

Seats
5 seats, Leather

CO2 Emissions
★ ★ ★ ☆ ☆ ☆
216 grams/km


Energy Economy
★ ☆ ☆ ☆ ☆ ☆
Annual fuel cost of \$3,650
9.3L per 100km

Cost per year is an estimate based on petrol price of \$2.80 per litre and an average distance of 14000 km. Emissions and Energy Economy figures standardised to 3P WLTP.

Stock ID: 47255



Regent Car Court | Phone 0276122217 | Email south@regentcars.co.nz
167-169 Clyde Street, Invercargill 9810, New Zealand
www.regentcars.co.nz



★★★★★
4.71 | 695 reviews