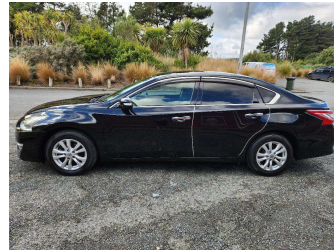
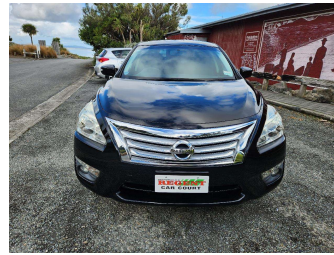


# 2014 Nissan Teana 250XE



**Purchase Price** **\$13,990**  
Includes GST, Registration & Licensing

Finance may be available on this vehicle. Ask one of our friendly staff for more information.



Gain peace of mind with Mechanical Breakdown Insurance. **Ask us how.**



**Top features**

- » 2 Air Bags
- » ABS Braking
- » Air Con
- » Alloy Wheels
- » ESC
- » Fog Lamps
- » Indicator Mirror
- » Keyless Entry
- » Keyless Start
- » Power Mirrors
- » Power Steering
- » Push Button Start
- » Radio
- » Retractable Mirrors
- » Tinted Windows

Body Style  
**4 door, Sedan**

Odometer  
**128,408 km**

Engine  
**2500 cc, Internal Combustion**


Fuel Type  
**Petrol**

Transmission  
**Automatic**

Wheels  
-

VIN  
**7AT0DH71X24005208**

Interior  
**Black**

Safety  
  
Based on 2024 VSRR rating

Reg No.  
-

Ext Colour  
**Black**

History  
**Ex-Overseas**

Seats  
**5 seats, Cloth**

CO2 Emissions  
**★★★★☆**  
**181 grams/km**


Energy Economy  
**★★☆☆☆**  
**Annual fuel cost of \$3,020**  
**7.7L per 100km**

Cost per year is an estimate based on petrol price of \$2.80 per litre and an average distance of 14000 km. Emissions and Energy Economy figures standardised to 3P WLTP.

**Stock ID: 47271**



Regent Car Court | Phone 0276122217 | Email south@regentcars.co.nz  
167-169 Clyde Street, Invercargill 9810, New Zealand  
www.regentcars.co.nz



★★★★★  
4.71 | 742 reviews